

# Extraordinary Oyster Harbors Estate



440 Grand Island Drive, Oyster Harbors, Osterville, MA

<b>Price</b>	\$ 7,750,000
<b>Rooms:</b>	Sixteen
<b>Bedrooms:</b>	Seven *
<b>Bathrooms:</b>	Nine Full, Two Half *
<b>Living Area:</b>	11,546 square feet *
<b>Assessment:</b>	\$ 6,978,400 / 2025
<b>Acres:</b>	1.10 Acres
<b>Year Built:</b>	2013
<b>Heating:</b>	Hot Air / Oil
<b>Cooling:</b>	Central AC
<b>Water:</b>	Town
<b>Sewer:</b>	Private
<b>Taxes:</b>	\$ 57,908 / 2025
<b>Association:</b>	\$4,620 / 2025

\* Square footage, bedrooms and bathrooms include both main and guest houses.



**BERKSHIRE  
HATHAWAY**  
HOMESERVICES

ROBERT PAUL  
PROPERTIES

Privately sited within the prestigious Oyster Harbors golf enclave, this extraordinary estate is a masterclass in architectural sophistication and resort-style living. Encompassing a 10,000-square-foot main residence, a stunning two-bedroom guest house, and a spa-inspired pool area, the property offers a rare blend of timeless elegance and contemporary luxury. A gracious covered front porch welcomes you into a dramatic foyer, setting the tone for the refined interiors that follow. The main living spaces unfold in a thoughtfully designed layout that flows from formal living and family rooms to an elegant dining area with each space inviting connection, comfort, and celebration. At the heart of the home, the chef's kitchen is both striking and functional, anchored by dual oversized islands clad in premium granite, and accompanied by a fireside sitting room that beckons lingering conversation. Adjacent, the spectacular sunroom redefines indoor-outdoor living with a custom crafted bar and casual seating area at one end and a full second kitchen with custom built-in grill and dining area at the other, all enclosed by retractable screens for effortless seasonal enjoyment. Tucked away on the main level, the primary suite offers a private sanctuary, with its own fireplace, luxurious spa-like bath, and refined home office. The comfort and sophistication continue on the second level with four generously proportioned en-suite bedrooms and an inviting sitting room. Designed for comfort and connection, the finished lower level offers a wine cellar, media room, game room, and fitness space. This lavish interior flows effortlessly to an equally impressive exterior, where lush landscaping surrounds a resort-style pool framed by expansive lounging areas—perfect for everything from quiet afternoons to grand entertaining. Completing this offering is a beautiful two-bedroom guest house providing privacy and comfort for visiting guests. Set within a prestigious gated enclave with coveted beach and dock rights, this remarkable estate is the perfect fusion of architectural sophistication and everyday warmth – an extraordinary offering in one of Cape Cod's most prestigious settings. The information contained herein has been obtained through sources deemed reliable but cannot be guaranteed as to its accuracy. Buyers are encouraged to do their own due diligence through independent verification.









*Directions: Bridge Street to the Oyster Harbors Gatehouse.*

*The information contained herein has been obtained through sources deemed reliable but cannot be guaranteed as to its accuracy. Buyers are encouraged to do their own due diligence through independent verification.*

Exclusively Represented by

Robert B. Kinlin

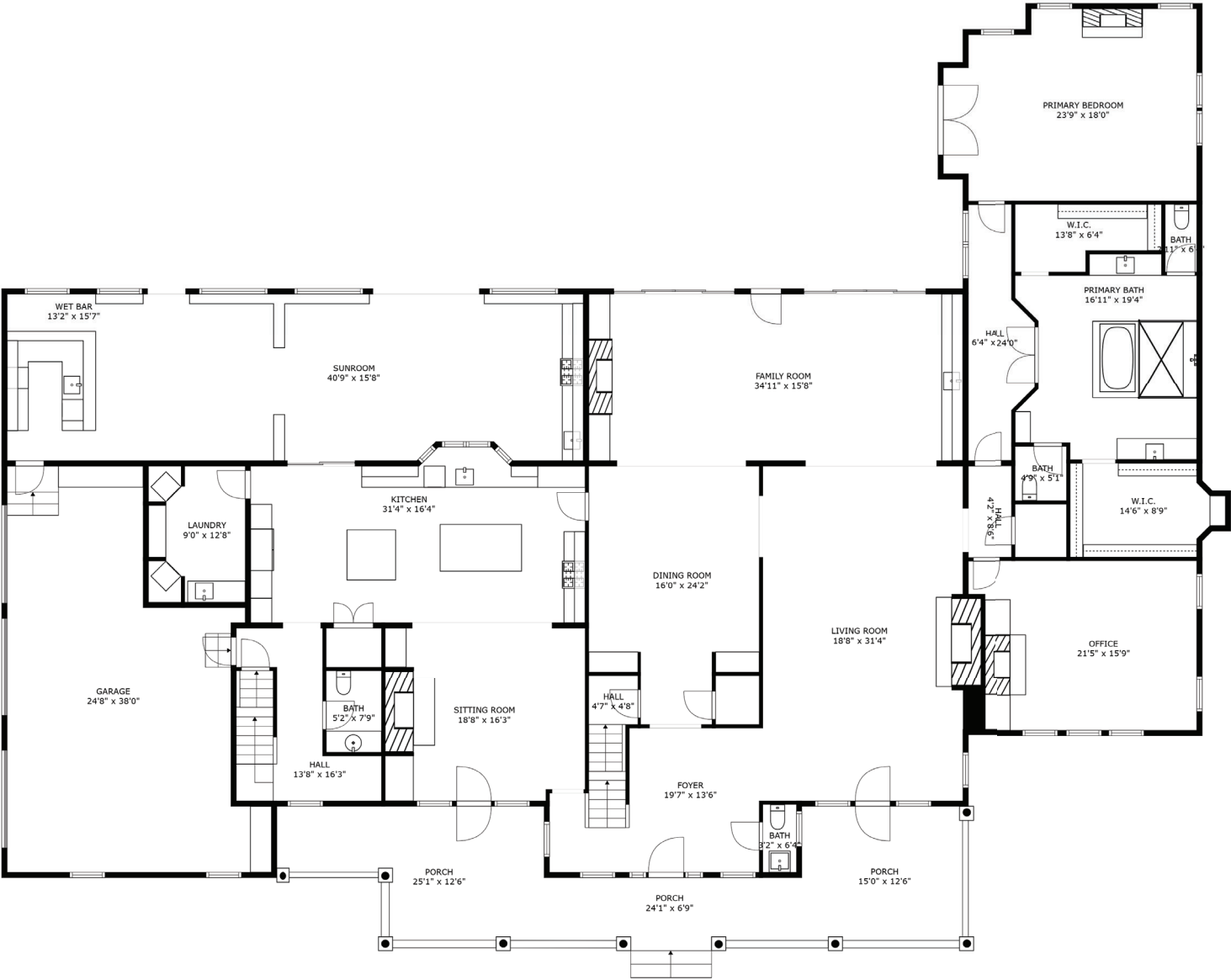
RKinlin@robertpaul.com - 508.648.2739

[www.RobertKinlin.com](http://www.RobertKinlin.com)

Berkshire Hathaway HomeServices Robert Paul Properties

©2025 BHH Affiliates, LLC. An independently operated subsidiary of HomeServices of America, Inc., a Berkshire Hathaway affiliate, and a franchisee of BHH Affiliates, LLC.

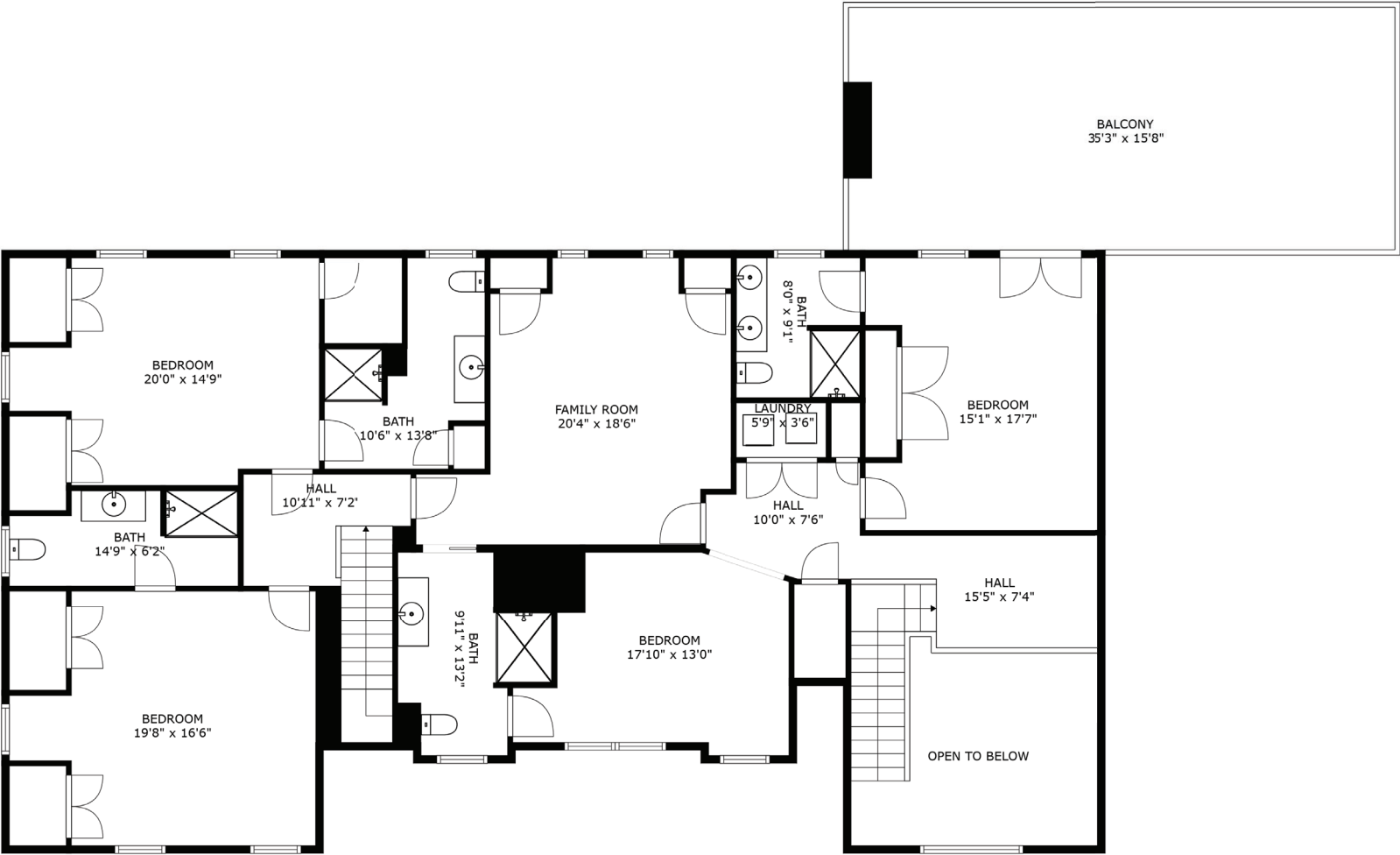
440 Grand Island Drive  
Main House  
Main Level



This FlōPlan floor plan is intended to represent the flow of the property and may not accurately represent the dimensions of each room or the property as a whole.  
Copyright © 2024 Financial Business Systems, Inc. All rights reserved.



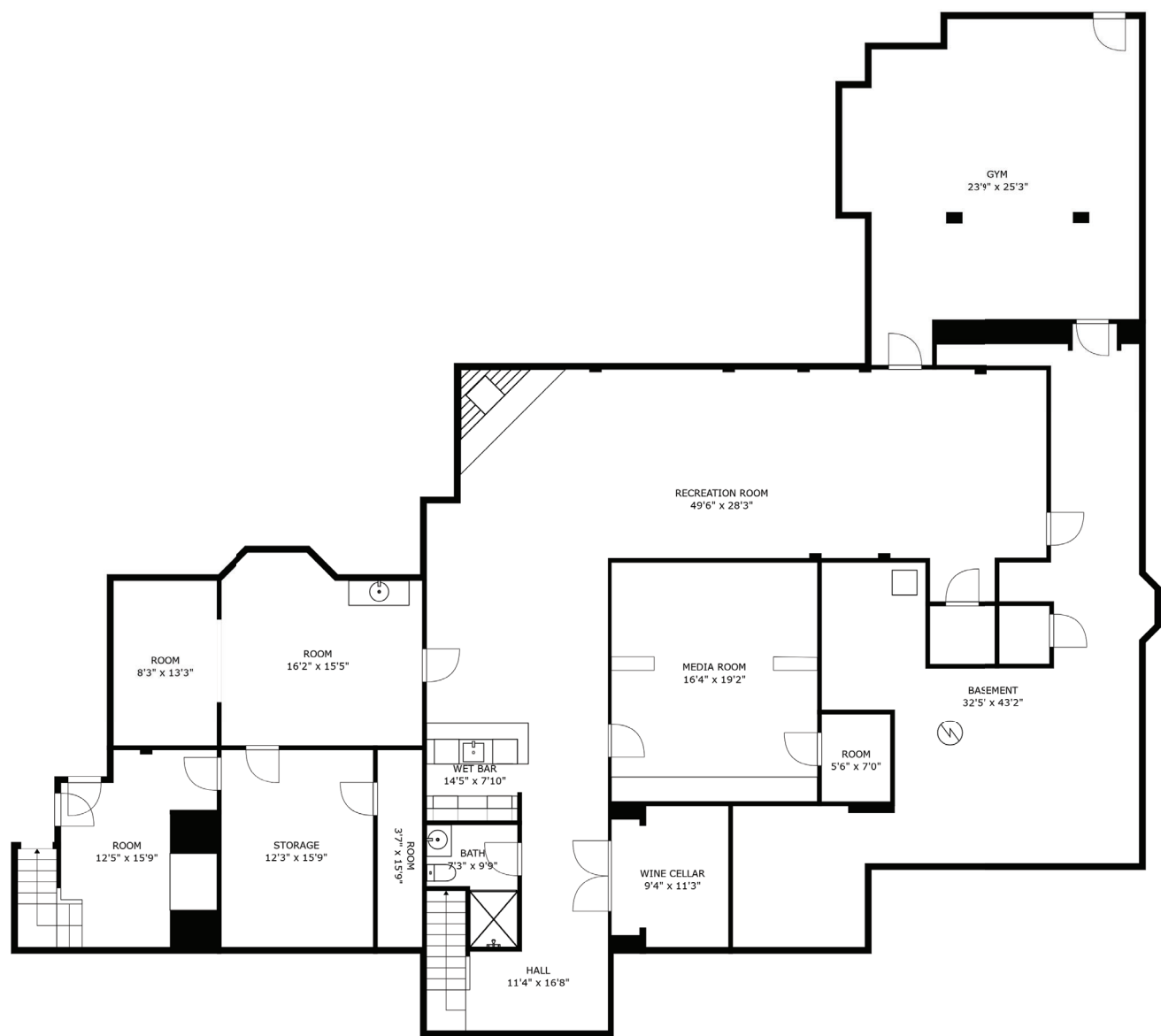
440 Grand Island Drive  
Main House  
Upper Level



This FlōPlan floor plan is intended to represent the flow of the property and may not accurately represent the dimensions of each room or the property as a whole.  
Copyright © 2024 Financial Business Systems, Inc. All rights reserved.



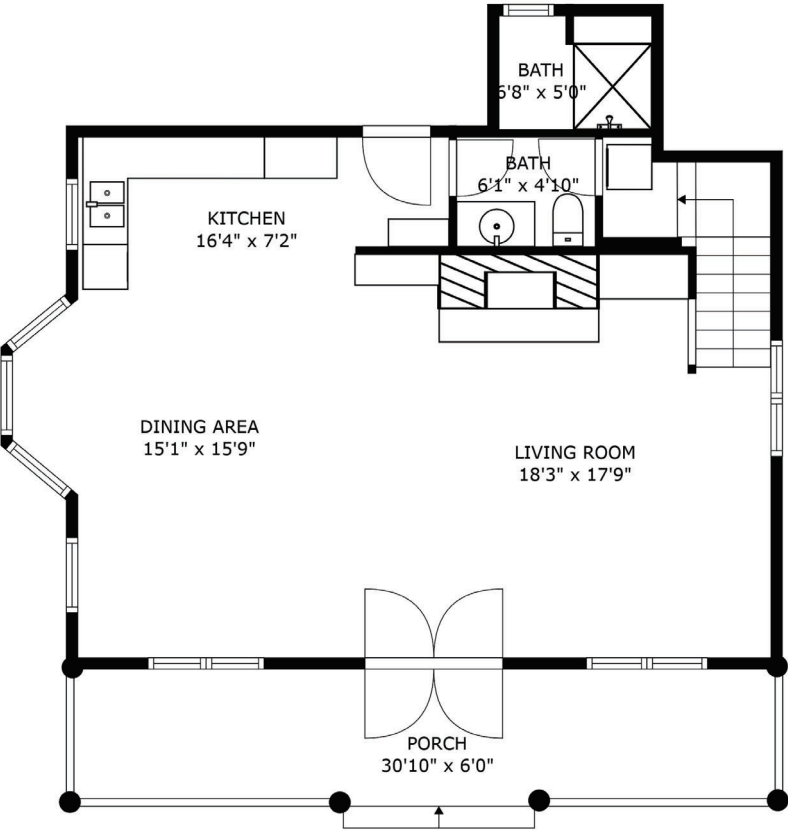
440 Grand Island Drive  
Main House  
Lower Level



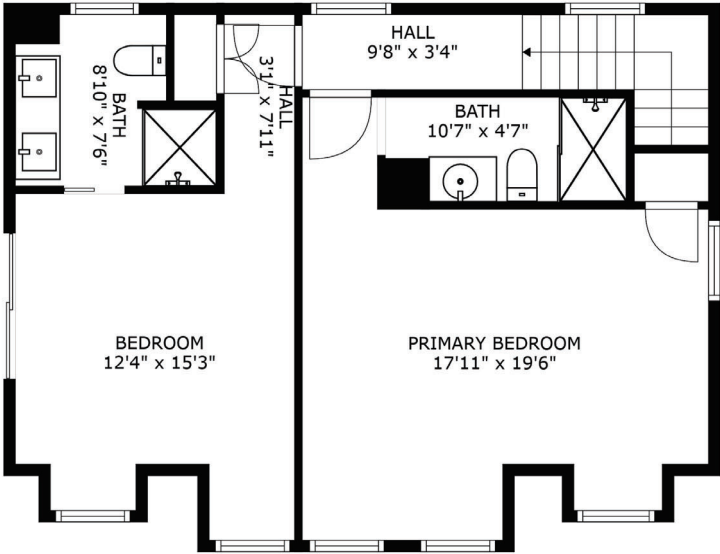
This FlōPlan floor plan is intended to represent the flow of the property and may not accurately represent the dimensions of each room or the property as a whole.  
Copyright © 2024 Financial Business Systems, Inc. All rights reserved.



440 Grand Island Drive  
Guest House



FLOOR 1



FLOOR 2

This FlōPlan floor plan is intended to represent the flow of the property and may not accurately represent the dimensions of each room or the property as a whole.  
Copyright © 2024 Financial Business Systems, Inc. All rights reserved.



# 440 Grand Island Drive, Osterville

## Property Details

### **Main Level**

#### Foyer

- Vaulted ceiling
- Wood flooring
- Powder room

#### Great Room

- Cathedral ceiling
- Wood flooring
- Fireplace with bluestone hearth and fieldstone surround
- Recessed lights
- French doors to porch

#### Dining Room

- Coffered ceiling
- Wood flooring
- Two recessed china cabinets
- Recessed lights

#### Family Room

- Wood flooring
- Breakfast nook with fieldstone fireplace and French doors to pool area
- Sitting area with wet bar including ice maker, sink, mini refrigerators, glass washer drawers and French doors to pool area

#### Sitting Room

- Coffered ceiling
- Wood flooring
- Fireplace with brick surround



- French doors to porch
- Recessed lights

### Kitchen

- Wood flooring
- Dual islands with breakfast bar seating and warming drawer
- Granite countertops
- SubZero refrigerators (2)
- Wolfe cooktop with 6 burners and griddle
- Viking wall oven
- Viking wall microwave
- Bosch dishwashers (2)
- Pantry

### Laundry room

- Marble tile flooring
- Built ins with sink
- Two sets of washers and dryers

### Primary Bedroom Suite

- Three floor elevator access
- Wall to wall carpet
- Fireplace with granite hearth
- Recessed lights
- Primary bath with two walk in closets, marble flooring, jacuzzi style tub, walk through shower and dual vanities
- Private office with cathedral ceiling, wood floors, built ins and fireplace
- French doors to pool area

### Sun Room

- IPE wood flooring
- Beadboard ceiling with beams and recessed lights
- Automated roll down full screens
- Full bar with mahogany topped island and breakfast bar, sink, dishwasher drawers, two wine chillers and ice maker

- Several seating areas
- Full outdoor kitchen, featuring professional grill, dishwasher drawers, refrigerator and sink.
- Direct access to garage

## **Second Level**

### Bedroom

- Wall to wall carpet
- Full bathroom
- Closets
- French doors to oversized deck

### Bedroom

- Wood flooring
- Full bathroom
- Recessed lights
- Closet

### Sitting Room

- Wall to wall carpet
- Full bathroom
- Recessed lights
- Closets

### Bedroom

- Wall to wall carpet
- Full bathroom
- Closets

### Bedroom

- Wall to wall carpet
- Full bathroom
- Closets

Three floor elevator access

## **Lower Level**

### Wine Room

- Stone flooring and brick back wall
- Built in storage shelves
- Built in cooling

### Recreation Room

- Carpet and tile flooring
- Bar with wine chillers, glass washer, sink and refrigerator
- Corner fireplace
- Recessed lights

### Salon / Massage Room

- Bamboo flooring
- Vanity with marble top
- Walk in cedar closet

### Theater Room

- Wall to wall carpet
- Dual level reclining seating
- Projection system with built in screen

### Exercise Room

- Rubberized flooring
- Mirrored walls
- Bulkhead

Other features: Several storage areas, full bathroom, three floor elevator access



## **Guest House**

### **Main Level**

- Living room with fireplace, built ins and recessed lights
- Breakfast nook
- Kitchenette with refrigerator, microwave and dishwasher
- Full bathroom and laundry

### **Upper Level**

- Ensuite bedroom with wood flooring, closet and french doors to balcony
- Ensuite bedroom with wood flooring and closet

## **Exterior**

### Pool Area

- Heated, covered Gunite pool
- Bluestone terrace

### Attached Garage

- Three bays
- Coated floor
- Automatic doors
- Built ins
- Direct access to sunroom

## **Additional Features**

- Generator
- Deeded beach and dock rights

 ROBERT B. KINLIN

O: 508.420.1414 x 204 - C: 508.648.2739 - rkinlin@robertpaul.com - www.robertkinlin.com

TOWN OF  
BARNSTABLE

## PROPERTY MAPS

### Legend

Road Names



Map printed on: 9/4/2024

0 83 167 Feet

Approx. Scale: 1 inch = 83 feet



This map is for illustration purposes only. It is not adequate for legal boundary determination or regulatory interpretation. This map does not represent an on-the-ground survey. It may be generalized, may not reflect current conditions, and may contain cartographic errors or omissions.

Parcel lines shown on this map are only graphic representations of Assessor's tax parcels. They are not true property boundaries and do not represent accurate relationships to physical objects on the map such as building locations.



### Town of Barnstable GIS Unit

367 Main Street, Hyannis, MA 02601

508-862-4624

[gis@town.barnstable.ma.us](mailto:gis@town.barnstable.ma.us)